

**GC**

# GC FujiCEM<sup>®</sup> Evolve

The zirconia luting solution from the leader  
in Glass Ionomer technology

The solution is evolution



# GC FujiCEM® Evolve

## Building on the legacy GC FujiCEM®, GC FujiCEM® Evolve takes the luting process to the next level!

GC FujiCEM® Evolve offers high bond strength to zirconia, ensuring reliable, long-lasting restorations. It provides high fluoride release and excellent moisture tolerance for enhanced predictable clinical performance.



## GC FujiCEM® Evolve is especially indicated for retentive preparation:



High strength ceramic (zirconia and lithium disilicate) crowns and bridges



Metal and porcelain fused to metal (PFM) crowns and bridges

- High bond strength
- New tack-cure feature reduces clean-up time to seconds
- High fluoride release and moisture tolerance
- High radiopacity for easy visualisation

## Glass ionomer advantages



**Moisture tolerant**  
No need for rubber dam



**Easy to use** with no need for primer



**Tack-cure ability** with good working time (2'15) and fast setting (4'30)



Virtually **no post-operative sensitivity**

Courtesy of Dr. Jeff Lineberry (USA)

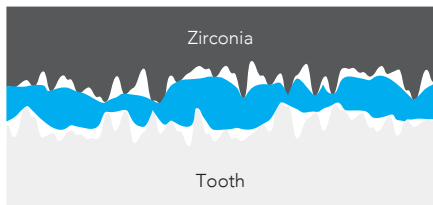
**Tack cure (3 seconds) for easy excess removal**



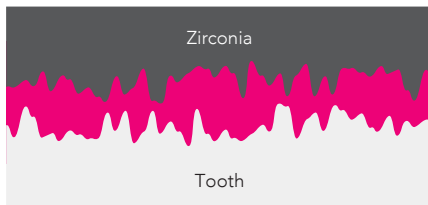
Courtesy of Dr. Javier Tapia Guadix (Spain)

# The solution is evolution

## High wettability to zirconia



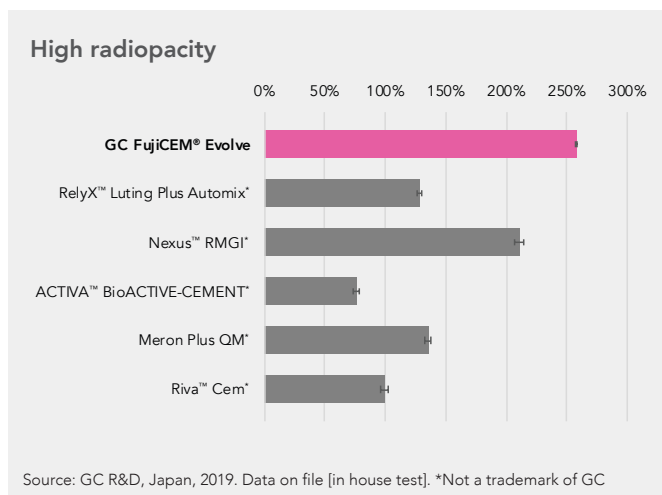
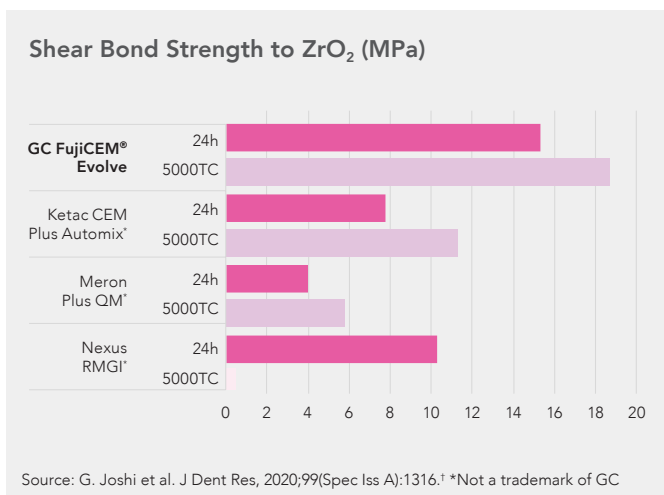
1. Composite resin luting cement



2. GC FujiCEM® Evolve

1. Composite resin luting cement does not penetrate the microporosities of zirconia.
2. Polyacrylic acid improves wettability to penetrate the microporosities on the surface of the tooth and restoration, and creates a strong interlocking.

## High bond strength and radiopacity



Utilises long chain monomer technology by adding long and more flexible monomer chains to enhance the cement's strength and stability.

## Cementation of Monolithic tetragonal zirconia crown with GC FujiCEM® Evolve



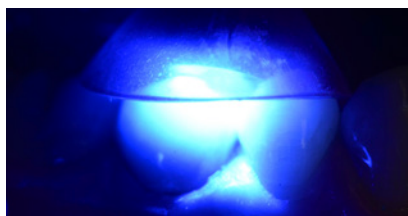
Initial situation



Dispensing with automix



Seating of the restoration



Rubbery state is reached after just 3 s of tack-curing



Easy to remove excess at once

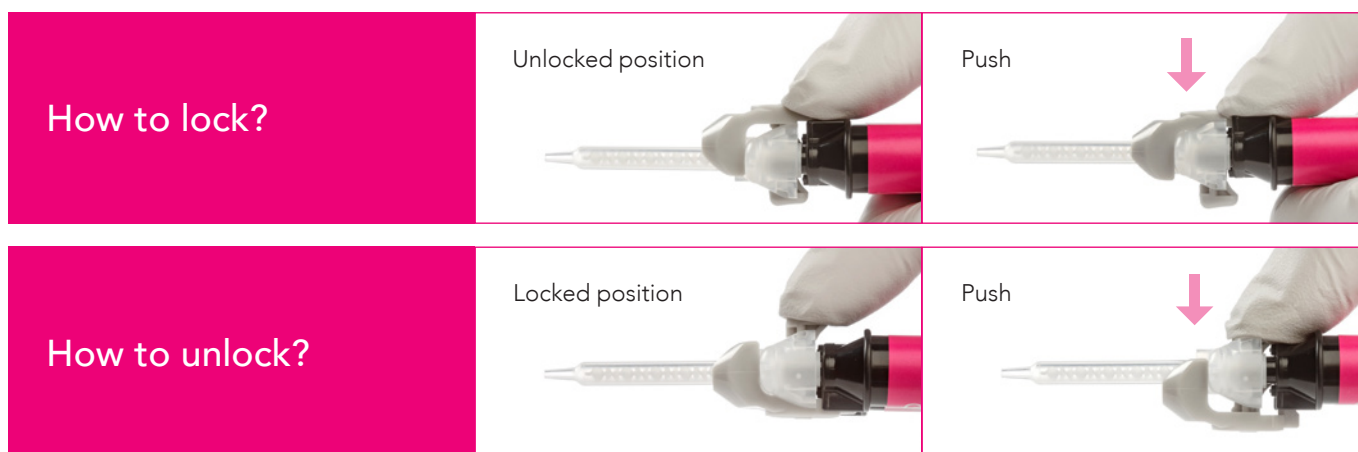


Final result

# GC FujiCEM® Evolve

## The solution is evolution

### GC push and click tip installation



#### GC FujiCEM® Evolve syringe (9.2 g / 5.0 ml)

GC FujiCEM® Evolve Single pack:  
Syringe (1), Tips Regular (15)

GC FujiCEM® Evolve Triple pack Automix:  
Syringe (3), Tips Regular (45)

GC Push and Click Tip Regular (15)

GC Push and Click Tip Endo (15)

Scan to view tip  
installation video



Find the step-by-step  
for all luting procedures  
on the **GC Luting Guide**



GC FujiCEM® Evolve is a trademark of GC.

\* Comparison of Different RMGI Cements Bond Strength to Zirconia G. Joshi et al. J Dent Res J Dent Res Vol 99 (Spec Iss A): 1316, 2020.

\* Ketac CEM Plus Automix, Meron Plus QM, Nexus RMGI, RelyX Luting Plus Automix, ACTIVA BioACTIVE-CEMENT and Riva Cem are not trademarks of GC.



Since 1921  
100 years of Quality in Dental

GC Australasia Dental Pty Ltd  
1753 Botany Road Banksmeadow  
NSW 2019 Australia

T: +61 2 9301 8200  
E: info.australasia@gc.dental  
www.gc.dental/australasia